



HOIDEN BRIDESMAIDS | 2025 CATALOGUE

EVERYTHING YOU NEED TO KNOW

HOW TO PLACE YOUR ORDER

If you found your perfect dress in our Bridesmaids Catalogue you can mail us at hello@hoiden.co.za for the order form & colour chart. Once the order form has been sent through to us we will reply with a quotation. Alternatively dresses can be ordered on the website by adding each style to cart.

CAN I CHOOSE MY OWN COLOUR

Hoiden has a variety of colours to choose from. Please email us for the latest colour chart. Please note that the colours might differ slightly from the actual colour available due to variety of screen lighting/printer colours. If you would like us to send you colour fabric swatches, please contact us.

HOW DOES PAYMENT WORK

We need a 50% deposit to confirm your order. Once you decide to accept the quote you can eft the deposit and send through the Proof Of Payment. The final payment is only due before the dress is collected or couriered. When ordering on the website, payment can be made via payfast with card.

WHEN WILL I RECEIVE THE ORDER

Our lead-time for Bridesmaids dresses are 6 to 8 weeks. As soon as we receive your proof of payment your order will be booked into a production slot.

If you do however want your dress only delivered closer to the wedding date you can indicate the exact delivery date on the order form which we will then work according to.

If you want the dress sooner than the average 6 to 8 week lead-time, we do offer this service for an additional R400 charge.

WHERE IS HOIDEN LOCATED

We are an online store based in Port Elizabeth, shipping nationwide to your door. All dresses are manufactured in PE. Our styles are specifically designed with online sales in mind. The fit and patterns have been tried and tested on numerous clients and body shapes.

HOW MUCH WILL IT BE TO COURIER THE DRESSES TO MY DOOR

1-3 Dresses = R180
4-7 Dresses = R250
More than 7 Dresses = R300

HOW DOES THE CATALOGUE PRICING WORK

Once you have decided on the style you like, you will notice that there are different price options. The styles in this collection can be made in either a matt-look fabric or a silk look fabric. Meaning that you can choose if you want your dress to have a matt or silk-like finish. Fabric will play a role to achieve this hence the price difference between the two options. Please note that the colour options for these two fabric options are not the same. We also wanted to make each option as budget friendly as possible & give YOU the choice on how much you are willing to spend on your bridesmaids dresses. There are TWO different sizing options to each fabric option. They are:

STANDARD PRICE OPTION

Standard sizes are our more budget friendly price option that works on your normal retail sizes
i.e sizes 30 - 41

YOU choose the standard size you feel will work best for your body according to our measure chart.

You can find our Youtube tutorial on "How To Measure" here for more guidance:

<https://www.youtube.com/watch?v=PieH0TRgW5o&t=2s>

When ordering on the standard size price option this will EXCLUDE alterations or tailoring.

The dress is sold AS IS .

Please note that if the incorrect size is ordered we do not offer refunds, as the dresses are all custom made on order. Once an order has been placed for that specific style, size, skirt cut, and colour. The chances of reselling the dress again to someone with the exact same specifications might be rare.

ORDERING THE CORRECT SIZE IS KEY WITH THIS OPTION.

If you would like tailoring and alterations done on your standard option dress, we can then provide you with a quote for the specific alteration, however the "Made-to-measure Price Option" might have been a more affordable option for you.

MADE TO MEASURE OPTION

When ordering a dress on this price option the dress will be made according to your measurements given.

Follow the tutorial on How To Measure here:

<https://www.youtube.com/watch?v=PieH0TRgW5o&t=2s>

Working according to measurements will definitely help to achieve a perfect fit, but tailoring helps to emphasise or hide areas of your unique body that measurements alone could not indicate to us.

If you are not able to attend the showrooms but still want the Made-to-Measure option we can assist with a step-by-step guide on how to pin the dress to indicate the alterations needed.

Courier costs are however NOT included.

SIZE CHART

| SIZE | 30 | 31 | 32 | 33 | 34 | 35 |
|--------------|-------|-------|-------|-------|-------|-------|
| BUST | 80CM | 84CM | 88CM | 92CM | 96CM | 100CM |
| WAIST | 60CM | 64CM | 68CM | 72CM | 76CM | 80CM |
| LONG LENGTH | 115CM | 115CM | 115CM | 115CM | 115CM | 115CM |
| SHORT LENGTH | 55CM | 55CM | 55CM | 55CM | 55CM | 55CM |
| TEA LENGTH | 85CM | 85CM | 85CM | 85CM | 85CM | 85CM |

| SIZE | 36 | 37 | 38 | 39 | 40 | 41 |
|--------------|-------|-------|-------|-------|-------|-------|
| BUST | 104CM | 108CM | 112CM | 116CM | 120CM | 124CM |
| WAIST | 84CM | 88CM | 92CM | 96CM | 100CM | 104CM |
| LONG LENGTH | 115CM | 115CM | 115CM | 115CM | 115CM | 115CM |
| SHORT LENGTH | 55CM | 55CM | 55CM | 55CM | 55CM | 55CM |
| TEA LENGTH | 85CM | 85CM | 85CM | 85CM | 85CM | 85CM |

For a detailed video on how to take your measurements visit this link :
<https://www.youtube.com/watch?v=PieH0TRgW5o>

CHOOSE YOUR CUT



Drawstring
(adjustable slit height)



Straight



Tulip



Flare



add Hem Frill



Fit-Flare



add slit



Tea



Short

1901



-STYLE HB1901-

Matt-Look

STANDARD OPTION:

Short R1290 | Straight R1570 | Drawstring Split Short R1520

Tea length R1640 | Flare R1790 | Fit Flare R1790

Add a slit R200

Add Frill Hem R350

MADE TO MEASURE OPTION:

Short R1890 | Straight R2170 | Drawstring Split Short R2120

Tea length R2240 | Flare R2390 | FitFlare R2390

Add a slit R200

Add Frill Hem R350

-STYLE HB1901-

Silk-Look

STANDARD OPTION:

Short R1490 | Straight R1770 | Drawstring Split Short R1720

Tea length R1840 | Flare R1990 | Fit Flare R1990

Add a slit R200

MADE TO MEASURE OPTION:

Short R2090 | Straight R2370 | Drawstring Split Short R2320

Tea length R2440 | Flare R2590 | FitFlare R2590

Add a slit R20

Add Frill Hem R350

* Model is wearing fit flare cut with added slit *

-STYLE HB2101-

Matt-Look

STANDARD OPTION:

Short R1290 | Straight R1520 | Drawstring Split Short R1320

Tea length R1590 | Flare R1740 | Fit Flare R1740

Add a slit R200

Add Frill Hem R350

MADE TO MEASURE OPTION:

Short R1890 | Straight R2120 | Drawstring Split Short R1920

Tea length R2190 | Flare R2340 | FitFlare R2340

Add a slit R200

Add Frill Hem R350

2101



* Model is wearing
flare cut with added slit *



-STYLE HB2112-

Matt-Look

STANDARD OPTION:

Short R1390 | Long R1840 | Tulip R1640

Add Frill Hem R350

MADE TO MEASURE OPTION:

Short R1990 | Long R2440 | Tulip R2240

Add Frill Hem R350

*** Wrap-Around style Dress
Model is wearing Long Cut ***

-STYLE HB2121-

Matt-Look

STANDARD OPTION:

Short R1270 | Straight R1490 | Drawstring Split Short R1300

Tea length R1570 | Flare R1640 | Fit Flare R1640

Add a slit R200

Add Frill hem R350

MADE TO MEASURE OPTION:

Short R1870 | Straight R2140 | Drawstring Split Short R2015

Tea length R2220 | Flare R2290 | FitFlare R2290

Add a slit R200

Add Frill Hem R350

* Model is wearing fit flare cut with added slit *

-STYLE HB2121-

Silk-Look

STANDARD OPTION:

Short R1470 | Straight R1690 | Drawstring Split Short R1500

Tea length R1770 | Flare R1840 | Fit Flare R1840

Add a slit R200

Add GFrill Hem R350

MADE TO MEASURE OPTION:

Short R2070 | Straight R2290 | Drawstring Split Short R2215

Tea length R2270 | Flare R2440 | FitFlare R2440

Add a slit R200

Add Frill Hem R350





-STYLE HB2125-

Matt-Look

STANDARD OPTION:

Short R1290 | Straight R1540 | Drawstring Split Short R1320

Tea length R1620 | Flare R1690 | Fit Flare R1690

Add a slit R200

Add Hem Frill R350

MADE TO MEASURE OPTION:

Short R1890 | Straight R2140 | Drawstring Split Short R1920

Tea length R2240 | Flare R2290 | FitFlare R2290

Add a slit R200

Add Hem Frill R350

-STYLE HB2125-

Silk-Look

STANDARD OPTION:

Short R1490 | Straight R1740 | Drawstring Split Short R1520

Tea length R1820 | Flare R1890 | Fit Flare R1890

Add a slit R200

MADE TO MEASURE OPTION:

Short R2090 | Straight R2340 | Drawstring Split Short R2120

Tea length R2440 | Flare R2490 | FitFlare R2490

Add a slit R200

Add Hem Frill R350

* Model is wearing fit flare cut *

2022



-STYLE HB2202-

Matt-Look

STANDARD OPTION:

Short R1390 | Long R1840 | Tulip R1640

Add Hem frill R350

MADE TO MEASURE OPTION:

Short R1990 | Long R2440 | Tulip R2240

Add Hem Frill R350

*** Wrap-Around style Dress ***

-STYLE HB2205-

Matt-Look

STANDARD OPTION:

Short R1270 | Straight R1490 | Drawstring Split Short R1300

Tea length R1570 | Flare R1640 | Fit Flare R1640

Add a slit R200

Add Frill Hem R350

MADE TO MEASURE OPTION:

Short R1870 | Straight R2090 | Drawstring Split Short R1900

Tea length R2070 | Flare R2240 | FitFlare R2240

Add a slit R200

Add Frill Hem R350

*** Model is wearing fit flare cut ***



-STYLE HB2210-

Matt-Look

STANDARD OPTION:

Short R1390 | Straight R1620 | Drawstring Split Short R1420

Tea length R1690 | Flare R1840 | Fit Flare R1840

Add a slit R200

Add Hem Frill (Option for Fit-Flare Cut) R350

MADE TO MEASURE OPTION:

Short R1990 | Straight R2220 | Drawstring Split Short R2020

Tea length R2290 | Flare R2440 | FitFlare R2440

Add a slit R200

Add Hem Frill (Option for Fit-Flare Cut) R350



* Model is wearing Fit-Flare cut with added slit*



-STYLE HB2212-

Matt-Look

STANDARD OPTION:

Short R1270 | Straight R1490 | Drawstring Split Short R1300

Tea length R1570 | Flare R1640 | Fit Flare R1640

Add a slit R200

Add Frill hem R350

MADE TO MEASURE OPTION:

Short R1870 | Straight R2140 | Drawstring Split Short R2015

Tea length R2220 | Flare R2290 | FitFlare R2290

Add a slit R200

Add Frill Hem R350

-STYLE HB2212-

Silk-Look

STANDARD OPTION:

Short R1470 | Straight R1690 | Drawstring Split Short R1500

Tea length R1770 | Flare R1840 | Fit Flare R1840

Add a slit R200

Add GFrill Hem R350

MADE TO MEASURE OPTION:

Short R2070 | Straight R2290 | Drawstring Split Short R2215

Tea length R2270 | Flare R2440 | FitFlare R2440

Add a slit R200

Add Frill Hem R350

* Model is wearing fit flare cut *

-STYLE HB2215-

Matt-Look

STANDARD OPTION:

Short R1390 | Long R1840 | Tulip R1640

Add Frill Hem R350

MADE TO MEASURE OPTION:

Short R1990 | Long R2440 | Tulip R2240

Add Frill Hem R350

* Wrap-Around style Dress , Long Cut *



2216

-STYLE HB2216-

Matt-Look

STANDARD OPTION:

Short R1390 | Long R1840 | Tulip R1640

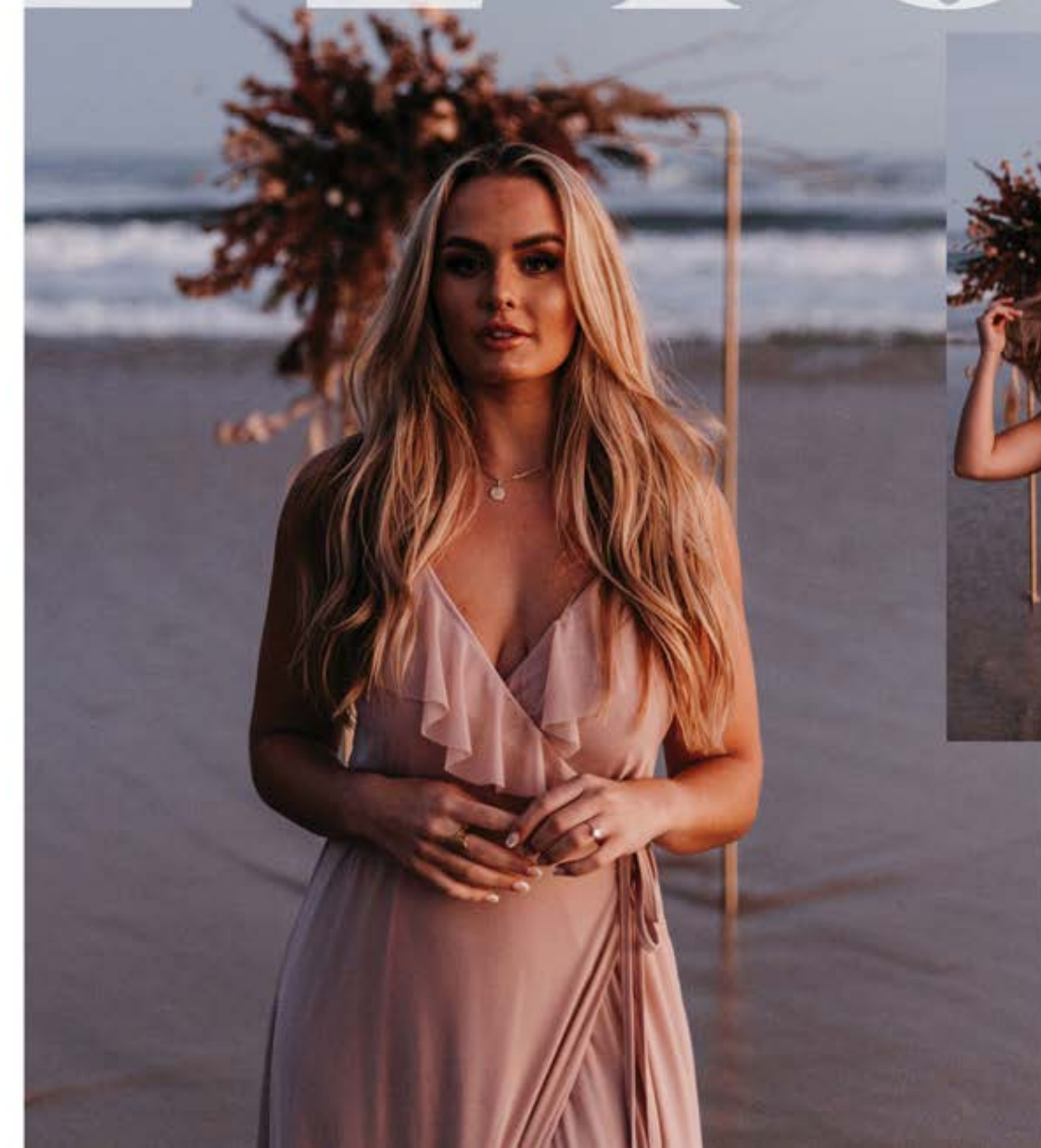
Add Hem frill R350

MADE TO MEASURE OPTION:

Short R1990 | Long R2440 | Tulip R2240

Add Hem Frill R350

* Wrap-Around style Dress, Long cut *



-STYLE HB2217-

Matt-Look

STANDARD OPTION:

Short R1390 | Long R1840 | Tulip R1640

Add Hem frill R350

MADE TO MEASURE OPTION:

Short R1990 | Long R2440 | Tulip R2240

Add Hem Frill R350

* Wrap-Around style Dress, Long cut *



-STYLE HB2302-

Matt-Look

STANDARD OPTION:

Short R1290 | Straight R1540 | Drawstring Split Short R1320

Tea length R1610 | Flare R1790 | Fit Flare R1790

Add a slit R200

Add Frill hem R350

MADE TO MEASURE OPTION:

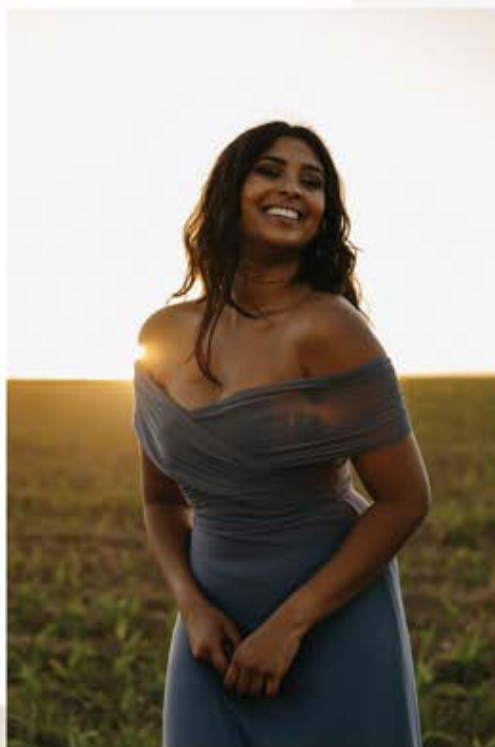
Short R1890 | Straight R2140 | Drawstring Split Short R1920

Tea length R2210 | Flare R2390 | FitFlare R2390

Add a slit R200

Add Frill Hem R350

* Model is wearing fit flare cut *



2302

2303



-STYLE HB2303- *Matt-Look*

STANDARD OPTION:

Short R1290 | Straight R1540 | Drawstring Split Short R1320

Tea length R1610 | Flare R1790 | Fit Flare R1790

Add a slit R200

Add Frill hem R350

MADE TO MEASURE OPTION:

Short R1890 | Straight R2140 | Drawstring Split Short R1920

Tea length R2210 | Flare R2390 | FitFlare R2390

Add a slit R200

Add Frill Hem R350

* Model is wearing fit flare cut *

-STYLE HB2804-

Matt-Look

STANDARD OPTION:

Short R1270 | Straight R1490 | Drawstring Split Short R1300

Tea length R1570 | Flare R1640 | Fit Flare R1640

Add a slit R200

Add Frill Hem R350

MADE TO MEASURE OPTION:

Short R1870 | Straight R2090 | Drawstring Split Short R1900

Tea length R2070 | Flare R2240 | FitFlare R2240

Add a slit R200

Add Frill Hem R350

* Model is wearing Fit Flare cut *



-STYLE HB2305-

Matt-Look

STANDARD OPTION:

Short R1390 | Long R1840 | Tulip R1640

Add Frill Hem R350

MADE TO MEASURE OPTION:

Short R1990 | Long R2440 | Tulip R2240

Add Frill Hem R350

2305



* Wrap around dress.
Model is wearing
Long cut *

2306



-STYLE HB2806- *Matt-Look*

STANDARD OPTION:

Short R1270 | Straight R1490 | Drawstring Split Short R1300

Tea length R1570 | Flare R1640 | Fit Flare R1640

Add a slit R200

Add Frill Hem R350

MADE TO MEASURE OPTION:

Short R1870 | Straight R2090 | Drawstring Split Short R1900

Tea length R2070 | Flare R2240 | Fit Flare R2240

Add a slit R200

Add Frill Hem R350

* models are wearing Tea length (emerald) & fit flare with added slit (duckegg)*

-STYLE HB2809-

Matt-Look

STANDARD OPTION:

Short R1290 | Straight R1570 | Drawstring Split Short R1520

Tea length R1640 | Flare R1790 | Fit Flare R1790

Add a slit R200

Add Frill Hem R350

MADE TO MEASURE OPTION:

Short R1890 | Straight R2170 | Drawstring Split Short R2120

Tea length R2240 | Flare R2390 | FitFlare R2390

Add a slit R200

Add Frill Hem R350



* Model is wearing Fit Flare cut *

2310



-STYLE HB2810-

Matt-Look

STANDARD OPTION:

Short R1290 | Straight R1570 | Drawstring Split Short R1520

Tea length R1640 | Flare R1790 | Fit Flare R1790

Add a slit R200

Add Frill Hem R350

MADE TO MEASURE OPTION:

Short R1890 | Straight R2170 | Drawstring Split Short R2120

Tea length R2240 | Flare R2390 | Fit Flare R2390

Add a slit R200

Add Frill Hem R350

* Model is wearing
fit flare cut *

-STYLE HB2315-

Matt-Look

STANDARD OPTION:

Short R1290 | Straight R1540 | Drawstring Split Short R1320

Tea length R1610 | Flare R1790 | Fit Flare R1790

Add a slit R200

Add Frill hem R350

MADE TO MEASURE OPTION:

Short R1890 | Straight R2140 | Drawstring Split Short R1920

Tea length R2210 | Flare R2390 | Fit Flare R2390

Add a slit R200

Add Frill Hem R350



* Models are wearing fit flare (light blue) & Tea length (black) *

2402



-STYLE HB2402-

Matt-Look

STANDARD OPTION:

Short R1270 | Straight R1490 | Drawstring Split Short R1300

Tea length R1570 | Flare R1640 | Fit Flare R1640

Add a slit R200

Add Frill hem R350

MADE TO MEASURE OPTION:

Short R1870 | Straight R2140 | Drawstring Split Short R2015

Tea length R2220 | Flare R2290 | Fit Flare R2290

Add a slit R200

Add Frill Hem R350

-STYLE HB2402-

Silk-Look

STANDARD OPTION:

Short R1470 | Straight R1690 | Drawstring Split Short R1500

Tea length R1770 | Flare R1840 | Fit Flare R1840

Add a slit R200

Add GFrill Hem R350

MADE TO MEASURE OPTION:

Short R2070 | Straight R2290 | Drawstring Split Short R2215

Tea length R2270 | Flare R2440 | Fit Flare R2440

Add a slit R200

Add Frill Hem R350

*** Model is wearing fit flare cut ***

-STYLE HB2408-

Matt-Look

STANDARD OPTION:

Short R1290 | Straight R1520 | Drawstring Split Short R1320

Tea length R1590 | Flare R1740 | Fit Flare R1740

Add a slit R200

Add Frill hem R350

MADE TO MEASURE OPTION:

Short R1890 | Straight R2120 | Drawstring Split Short R1920

Tea length R2190 | Flare R2340 | FitFlare R2340

Add a slit R200

Add Frill Hem R350



-STYLE HB2408-

Silk-Look

STANDARD OPTION:

Short R1490 | Straight R1720 | Drawstring Split Short R1520

Tea length R1790 | Flare R1940 | Fit Flare R1940

Add a slit R200

Add GFrill Hem R350

MADE TO MEASURE OPTION:

Short R2090 | Straight R2320 | Drawstring Split Short R2120

Tea length R2390 | Flare R2540 | FitFlare R2540

Add a slit R200

Add Frill Hem R350



* Models is wearing fit flare cut with added slit*



-STYLE HB2409-

Matt-Look

STANDARD OPTION:

Short R1270 | Straight R1490 | Drawstring Split Short R1300

Tea length R1570 | Flare R1640 | Fit Flare R1640

Add a slit R200

Add Frill hem R350

MADE TO MEASURE OPTION:

Short R1870 | Straight R2140 | Drawstring Split Short R2015

Tea length R2220 | Flare R2290 | Fit Flare R2290

Add a slit R200

Add Frill Hem R350

-STYLE HB2409-

Silk-Look

STANDARD OPTION:

Short R1470 | Straight R1690 | Drawstring Split Short R1500

Tea length R1770 | Flare R1840 | Fit Flare R1840

Add a slit R200

Add Frill Hem R350

MADE TO MEASURE OPTION:

Short R2070 | Straight R2290 | Drawstring Split Short R2215

Tea length R2270 | Flare R2440 | Fit Flare R2440

Add a slit R200

Add Frill Hem R350

* model is wearing Fit Flare with added slit *

-STYLE HB2413-

Matt-Look

STANDARD OPTION:

Short R1270 | Straight R1490 | Drawstring Split Short R1300

Tea length R1570 | Flare R1640 | Fit Flare R1640

Add a slit R200

Add Frill hem R350

MADE TO MEASURE OPTION:

Short R1870 | Straight R2140 | Drawstring Split Short R2015

Tea length R2220 | Flare R2290 | FitFlare R2290

Add a slit R200

Add Frill Hem R350

* Model is wearing Fit Flare cut
with added slit *

-STYLE HB2413-

Silk-Look

STANDARD OPTION:

Short R1470 | Straight R1690 | Drawstring Split Short R1500

Tea length R1770 | Flare R1840 | Fit Flare R1840

Add a slit R200

Add Frill Hem R350

MADE TO MEASURE OPTION:

Short R2070 | Straight R2290 | Drawstring Split Short R2215

Tea length R2270 | Flare R2440 | FitFlare R2440

Add a slit R200

Add Frill Hem R350



-STYLE HB2501-

Matt-Look

STANDARD OPTION:

Short R1290 | Straight R1540 | Drawstring Split Short R1320

Tea length R1610 | Flare R1790 | Fit Flare R1790

Add a slit R200

Add Frill hem R350

MADE TO MEASURE OPTION:

Short R1890 | Straight R2140 | Drawstring Split Short R1920

Tea length R2210 | Flare R2390 | FitFlare R2390

Add a slit R200

Add Frill Hem R350

*** Model is wearing fit flare cut with added slit ***



2501



-STYLE HB2502-

Matt-Look

STANDARD OPTION:

Short R1290 | Straight R1540 | Drawstring Split Short R1320

Tea length R1610 | Flare R1790 | Fit Flare R1790

Add a slit R200

Add Frill hem R350

MADE TO MEASURE OPTION:

Short R1890 | Straight R2140 | Drawstring Split Short R1920

Tea length R2210 | Flare R2390 | FitFlare R2390

Add a slit R200

Add Frill Hem R350

*** Model is wearing fit flare cut with added slit ***

2502



2503

-STYLE HB2803-

Matt-Look

STANDARD OPTION:

Short R1290 | Straight R1540 | Drawstring Split Short R1320

Tea length R1610 | Flare R1790 | Fit Flare R1790

Add a slit R200

Add Frill hem R350

MADE TO MEASURE OPTION:

Short R1890 | Straight R2140 | Drawstring Split Short R1920

Tea length R2210 | Flare R2390 | FitFlare R2390

Add a slit R200

Add Frill Hem R350

* Model is wearing fit flare cut with added slit *



2504



-STYLE HB2504-

Matt-Look

STANDARD OPTION:

Full Circle Tea swing R1980

Add Frill hem R350

MADE TO MEASURE OPTION:

Full Circle Tea swing R2580

Add Frill hem R350

*** Model is wearing Full circle Tea swing with added frill ***

2505



-STYLE HB2505-

Matt-Look

STANDARD OPTION:

Wrap Top & Plain High Waisted pants R1650

MADE TO MEASURE OPTION:

Wrap Top & Plain High Waisted pants R2250

* Model is wearing Wrap top & plain High Waisted pants *

2506



-STYLE HB2506-

Matt-Look

STANDARD OPTION:

Short R1290 | Straight R1540 | Drawstring Split Short R1320

Tea length R1610 | Flare R1790 | Fit Flare R1790

Add a slit R200

Add Frill hem R350

MADE TO MEASURE OPTION:

Short R1890 | Straight R2140 | Drawstring Split Short R1920

Tea length R2210 | Flare R2390 | FitFlare R2390

Add a slit R200

Add Frill Hem R350

*** Model is wearing Tea length ***



2507

-STYLE HB2507-

Matt-Look

STANDARD OPTION:

Knee R1390 | Long R1840 | Tea R1640

MADE TO MEASURE OPTION:

Knee R1990 | Long R2440 | Tea R2240

* Model is wearing knee length *
* Dress has side slit *



-STYLE HB2508-

Matt-Look

STANDARD OPTION:

Short R1270 | Straight R1490 | Drawstring Split Short R1300

Tea length R1570 | Flare R1640 | Fit Flare R1640

Add a slit R200

Add Frill hem R350

MADE TO MEASURE OPTION:

Short R1870 | Straight R2140 | Drawstring Split Short R2015

Tea length R2220 | Flare R2290 | FitFlare R2290

Add a slit R200

Add Frill Hem R350

*** Model is wearing fit flare cut ***

2508



2509



-STYLE HB2509-

Matt-Look

STANDARD OPTION:

Short R1270 | Straight R1490 | Drawstring Split Short R1300

Tea length R1570 | Flare R1640 | Fit Flare R1640

Add a slit R200

Add Frill hem R350

MADE TO MEASURE OPTION:

Short R1870 | Straight R2140 | Drawstring Split Short R2015

Tea length R2220 | Flare R2290 | FitFlare R2290

Add a slit R200

Add Frill Hem R350

*** Model is wearing fit flare cut ***

-STYLE HB2510-

Matt-Look

STANDARD OPTION:

Beaded Cowl Top & Plain High waisted pants R1850

(Beaded option Colours available on request)

Plain Cowl Top & Plain High Waisted pants R1650

MADE TO MEASURE OPTION:

Beaded Cowl Top & Plain High waisted pants R2450

(Beaded option Colours available on request)

Plain Cowl Top & Plain High Waisted pants R2250

*** Models are wearing beaded top & plain High Waisted pants ***



-STYLE HB2511-

Matt-Look

STANDARD OPTION:

Short R1290 | Straight R1520 | Drawstring Split Short R1320

Tea length R1590 | Flare R1740 | Fit Flare R1740

Add a slit R200

Add Frill Hem R350

MADE TO MEASURE OPTION:

Short R1890 | Straight R2120 | Drawstring Split Short R1920

Tea length R2190 | Flare R2340 | Fit Flare R2340

Add a slit R200

Add Frill Hem R350



* Model is wearing Drawstring split short *

-STYLE HB2512-

Matt-Look

STANDARD OPTION:

Short R1390 | Long R1840 | Tulip R1640

Add Frill Hem R350

MADE TO MEASURE OPTION:

Short R1990 | Long R2440 | Tulip R2240

Add Frill Hem R350



2512

* Model is wearing tulip with added frill *

2513



-STYLE HB2513-

Matt-Look

STANDARD OPTION:

Short R1290 | Straight R1570 | Drawstring Split Short R1520

Tea length R1640 | Flare R1790 | Fit Flare R1790

Add a slit R200

Add Frill Hem R350

MADE TO MEASURE OPTION:

Short R1890 | Straight R2170 | Drawstring Split Short R2120

Tea length R2240 | Flare R2390 | FitFlare R2390

Add a slit R200

Add Frill Hem R350

*** Model is wearing fit flare cut with added slit ***

2514



-STYLE HB2514-
Matt-Look

STANDARD OPTION:

Short R1400 | Long R1850 | Tulip R1650

Add Frill Hem R350

MADE TO MEASURE OPTION:

Short R2000 | Long R2450 | Tulip R2250

Add Frill Hem R350

* Wrap-Around style Dress with lined long sleeves , Long cut *

2515



-STYLE HB2515-

Matt-Look

STANDARD OPTION:

Short R1270 | Straight R1490 |

Drawstring Split Short R1300

Tea length R1570 | Flare R1640 |

Fit Flare R1640

Add a slit R200

Add Frill hem R350

MADE TO MEASURE OPTION:

Short R1870 | Straight R2140 |

Drawstring Split Short R2015

-STYLE HB2515-

Silk-Look

STANDARD OPTION:

Short R1470 | Straight R1690 |

Drawstring Split Short R1500

Tea length R1770 | Flare R1840 |

Fit Flare R1840

Add a slit R200

Add Frill Hem R350

MADE TO MEASURE OPTION:

Short R2070 | Straight R2290 |

Drawstring Split Short R2215

* Model is wearing Fit Flare cut with added slit *



2516



-STYLE HB2516-

Matr-Look

STANDARD OPTION:

Short R1270 | Straight R1490 | Drawstring Split Short R1300

Tea lenght R1570 | Flare R1640 | Fit Flare R1640

Add a slit R200

Add Frill hem R350

MADE TO MEASURE OPTION:

Short R1870 | Straight R2140 | Drawstring Split Short R2015

Tea length R2220 | Flare R2290 | FitFlare R2290

Add a slit R200

Add Frill Hem R350

*** Model is wearing Drawsrting split short ***

2518



-STYLE HB2518-

Matt-Look

STANDARD OPTION:

Short R1270 | Straight R1490 | Drawstring Split Short R1300

Tea length R1570 | Flare R1640 | Fit Flare R1640

Add a slit R200

Add Frill hem R350

MADE TO MEASURE OPTION:

Short R1870 | Straight R2140 | Drawstring Split Short R2015

Tea length R2220 | Flare R2290 | FitFlare R2290

Add a slit R200

Add Frill Hem R350

-STYLE HB2518-

Silk-Look

STANDARD OPTION:

Short R1470 | Straight R1690 | Drawstring Split Short R1500

Tea length R1770 | Flare R1840 | Fit Flare R1840

Add a slit R200

Add Frill Hem R350

MADE TO MEASURE OPTION:

Short R2070 | Straight R2290 | Drawstring Split Short R2215

Tea length R2270 | Flare R2440 | FitFlare R2440

Add a slit R200

Add Frill Hem R350

* model is wearing Fit Flare with added slit & added frill hem *

-STYLE HB2519-

Matt-Look

STANDARD OPTION:

Short R1270 | Straight R1490 | Drawstring Split Short R1300

Tea length R1570 | Flare R1640 | Fit Flare R1640

Add a slit R200

Add Frill hem R350

MADE TO MEASURE OPTION:

Short R1870 | Straight R2140 | Drawstring Split Short R2015

Tea length R2220 | Flare R2290 | FitFlare R2290

Add a slit R200

Add Frill Hem R350



* Model is wearing fit flare cut with added frill hem *

-STYLE HB2521-

Matt-Look

STANDARD OPTION:

Short R1290 | Straight R1520 | Drawstring Split Short R1320

Tea length R1590 | Flare R1740 | Fit Flare R1740

Add a slit R200

Add Frill Hem R350

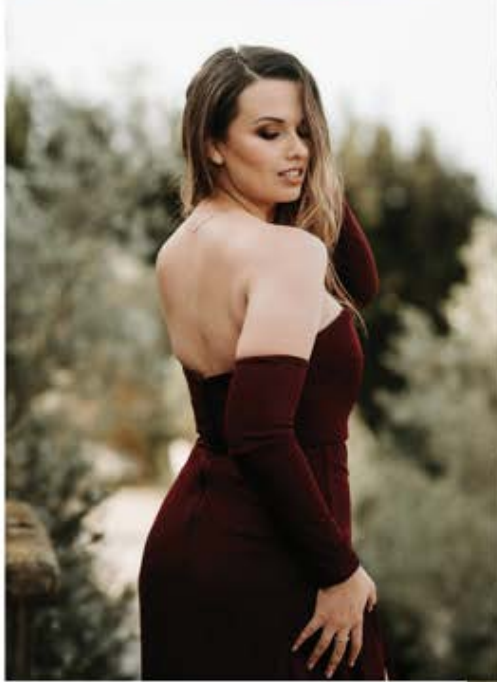
MADE TO MEASURE OPTION:

Short R1890 | Straight R2120 | Drawstring Split Short R1920

Tea length R2190 | Flare R2340 | FitFlare R2340

Add a slit R200

Add Frill Hem R350



* Model is wearing fit flare with added slit *
Dress can be worn with or without sleeves

-STYLE HB2522-

Matt-Look

STANDARD OPTION:

Short R1290 | Straight R1520 | Drawstring Split Short R1320

Tea length R1590 | Flare R1740 | Fit Flare R1740

Add a slit R200

Add Frill Hem R350

MADE TO MEASURE OPTION:

Short R1890 | Straight R2120 | Drawstring Split Short R1920

Tea length R2190 | Flare R2340 | FitFlare R2340

Add a slit R200

Add Frill Hem R350



2522

* Model is wearing fit flare with added slit *

TERMS AND CONDITIONS

The Quotation is only considered accepted once a 50% deposit is paid. The balance is payable on collection of goods, unless otherwise negotiated in writing or credit terms in place.

Cancellation Policy: We will impose a cancellation fee in the event of cancellation before delivery. The minimum cancellation fee is 50% of the total invoice amount if the goods have not been manufactured yet. The fee will depend on the nature of the order, the length notice of cancellation before delivery, the reasonable potential to find alternative clients for the order and the reason for cancellation. No refund on deposits in the event of cancellation for already ordered or made Special-Order Goods.

Delivery Policy: The client is responsible for the collection of the goods at the business physical address unless otherwise agreed.

We can arrange delivery on behalf of the client. If we arrange a delivery on behalf of the client, it will be at the clients cost depending on the area of delivery and the risk of handling the goods will be on the client as soon as the goods are placed on a delivery vehicle. The client must arrange their own insurance in this regard. We will communicate unavoidable delay in the delivery.

Courier: Hoiden will NEVER be liable for ANY courier fees (especially not for any alterations, returns or tailoring) and will always be on the Clients' final invoice. Hoiden has an account with one courier company i.e. Globeflight and will ensure to use the most affordable one for the location provided however Hoiden will not be responsible for late deliveries affected by the couriers. Please advise if you'd like to use your own courier.

Refund Policy: Please choose carefully. We do not allow refunds as all our dresses are specially made-up according to custom sizes chosen.

colours and styles. Where goods are defective, we need to be notified about it within 30 days after it has left our premises. If the product does not perform we need to be notified about it, and repairs will be arranged. If the product is installed, affixed or amended we will not accept a return of the product. We may charge a handling fee of 10% of the price if the return is accepted by management.

Fabric Manufacturers: The Client agrees that in no instance will Hoiden be responsible for any colour shade changes that might have occurred. Since Hoiden has no control over the manufacturing of the fabrics being purchased, Hoiden cannot take blame for colour changes that might occur in the dye of the fabric. Hoiden will however ensure that all changes will be kept to a minimum. Please also note that the lace pattern may change according to the colour chosen. The lace on the final product may not coincide with the lace on the catalogue. If different colours are chosen in the same style, please expect the lace pattern to all be different. Please do communicate with us if you're specific about the lace pattern.

Colour chart: All colours displayed on the colour chart are Hoiden's best effort at a match to the actual fabric colour. Hoiden takes no responsibility over differences in colour between the chart and the actual colour goods received. Please note that due to different monitor/screen/photographers editing/printer settings colours may appear differently to the actual colour intended. If you would like to be certain we do suggest asking for a physical colour swatch to be couriered at courier charges.

IF STANDARD SIZE OPTION WAS CHOSEN: Under no circumstances will alterations or tailoring of the goods be done at no cost. If tailoring or alterations are requested then an acceptable quote will be calculated and communicated before continuing. Please do make sure about the size by using our size guide and Youtube tutorial. Because the goods are made on order according to the specific size and colour we do not accept returns or exchanges if the wrong size was chosen. If any help is needed with choosing a size, please do communicate with our team that you need help.

IF CUSTOM MEASUREMENT OPTION WAS CHOSEN: Please ensure that measurements are taken correctly according to the measuring chart and tutorial on Youtube. Tailoring and alterations are included in your price but do expect minor alterations at your fittings. Measurements are given and used accordingly but for the absolute perfect fit, tailoring will always be needed. Measurements can only help us to identify the correct sizing but not to create an individual's exact body shape, so we do suggest having it altered if necessary.



HOIDEN 2025 COLLECTION PHOTOSHOOT CREDITS:

Photographer : Technique Studio Photography

Hair Stylist: Jordan Botha

Make-up artist: Iris Gomez

Models: Ilisma Muller, Tyra Thomas, Tyra Leigh Botha

Venue: The Rose Barn