

2022 BRIDESMAIDS COLLECTION

*hoider*

---

## **EVERYTHING YOU NEED TO KNOW**

---

### **HOW TO PLACE YOUR ORDER**

If you found your perfect dress in our Bridesmaids Catalogue you can mail us at [hello@hoiden.co.za](mailto:hello@hoiden.co.za) or [capetown@hoiden.co.za](mailto:capetown@hoiden.co.za) for the order form & colour chart. Once the order form has been sent through to us we will reply with a quotation.

### **CAN I CHOOSE MY OWN COLOUR**

Hoiden has a variety of colours to choose from. Please email us for the latest colour chart. Please note that the colours might differ slightly from the actual colour available due to variety of screen lighting/printer colours. if you would like us to send you colour fabric swatches, please contact us.

### **HOW DOES PAYMENT WORK**

We only need a 50% deposit to confirm your order. Once you decide to accept the quote you can eft the deposit and send through the Proof Of Payment. The final payment is only due before the dress is collected or couriered.

### **WHEN WILL I REVCEIVE THE ORDER**

Our lead-time for Bridesmaids dresses are 6 to 8 weeks. As soon as we receive your proof of payment your order is processed and we will inform you once a delivery date is set. If you do however want your dress only delivered closer to the wedding date you can indicate the exact delivery date on the order form which we will then work according to.

If you want the dress sooner than the average 6 to 8 week lead-time, we do offer this service for an additional R400 charge.

### **CAN I ORDER EVEN THOUGH I AM NOT IN PE OR CAPE TOWN**

Yes definitely! Our styles are specifically designed with online sales in mind. So the fit and patterns have been tried and tested on numerous clients and body shapes and we know they work. We can courier the dress nationwide

### **HOW MUCH WILL IT BE TO COURIER THE DRESSES TO MY DOOR**

1-3 Dresses = R180

4-7 Dresses = R250

More than 7 Dresses = R300

## **HOW DOES THE CATALOGUE PRICING WORK**

So once you have decided on a style you will notice that there are different price options. We wanted to make this collection as budget friendly as possible and give YOU the choice on how much you are willing to spend on your Bridesmaids dresses  
There are TWO different Price options:

### **STANDARD PRICE OPTION**

Standard sizes are our more budget friendly price option that works on your normal retail sizes  
i.e sizes 30 - 42

YOU choose the standard size you feel will work best for your body according to our measure chart.

You can find our Youtube tutorial on "How To Measure" here for more guidance:

<https://www.youtube.com/watch?v=PieH0TRgW5o&t=2s>

When ordering on the standard size price option this will EXCLUDE any fittings, alterations or tailoring.

The dress is sold AS IS .

Please note that if the incorrect size is ordered we do not offer refunds, as the dresses are all custom made on order. Once an order has been placed for that specific style, size, skirt cut, and colour. The chances of reselling the dress again to someone with the exact same specifications might be rare.

ORDERING THE CORRECT SIZE IS KEY WITH THIS OPTION.

If you would like tailoring and alterations done on your standard option dress, we can then provide you with a quote for the specific alteration, however the "Made-to-measure Price Option" might have been a more affordable option for you.

### **MADE TO MEASURE OPTION**

When ordering a dress on this price option the dress will be made according to your measurements given.

Follow the tutorial on How To Measure here:

<https://www.youtube.com/watch?v=PieH0TRgW5o&t=2s>

Or Make a measurement appointment with one of our showrooms

This price option will also include fittings (if you're able to attend one of our showrooms in PE or Cape Town) and Alterations/tailoring. This means that once the dress has been sewn up, one of our designers will assist in pinning and tailoring the dress to your unique body shape to ensure a perfect tailored fit.

Working according to measurements will definitely help to achieve a perfect fit, but tailoring helps to emphasise or hide areas of your unique body that measurements alone could not indicate to us.

If you are not able to attend the showrooms but still want the Made-to-Measure option we can assist with a step-by-step guide on how to pin the dress to indicate the alterations needed.

Courier costs are however NOT included.

# SIZE CHART

SIZE	30	31	32	33	34	35
BUST	80CM	84CM	88CM	92CM	96CM	100CM
WAIST	60CM	64CM	68CM	72CM	76CM	80CM
LONG LENGTH	115CM	115CM	115CM	115CM	115CM	115CM
SHORT LENGTH	55CM	55CM	55CM	55CM	55CM	55CM
TEA LENGTH	75CM	75CM	75CM	75CM	75CM	75CM

SIZE	36	37	38	39	40	41
BUST	104CM	108CM	112CM	116CM	120CM	124CM
WAIST	84CM	88CM	92CM	96CM	100CM	104CM
LONG LENGTH	115CM	115CM	115CM	115CM	115CM	115CM
SHORT LENGTH	55CM	55CM	55CM	55CM	55CM	55CM
TEA LENGTH	75CM	75CM	75CM	75CM	75CM	75CM

For a detailed video on how to take your measurements visit this link :  
<https://www.youtube.com/watch?v=PieH0TRgW5o>

# CHOOSE YOUR CUT



straight cut



tulip cut



Flare cut



Fit - Flare cut



add a slit



Teal length



short

Visit our YOUTUBE channel for a detailed video on all of the above mentioned cuts

<https://youtu.be/heS6sVIxAiY>



## SYLE HB1501

### STANDARD OPTION:

Short R1290 | Straight R1520 | Tulip R1630

Tea length R1590 | Flare R1740 | Fit Flare R1740

Add a slit R200

### MADE TO MEASURE OPTION:

Short R1890 | Straight R2120 | Tulip R2230

Tea length R2190 | Flare R2340 | Fit Flare R2340

Add a slit R200

*\*all prices inclusive of vat\**

# 1501



1502

## STYLE HB1502

### STANDARD OPTION:

Short R1230 | Straight R1450 | Tulip R1525

Tea length R1585 | Flare R1600 | Fit Flare R1600

Add a slit R200

### MADE TO MEASURE OPTION:

Short R1830 | Straight R2050 | Tulip R2125

Tea length R2185 | Flare R2200 | Fit Flare R2200

Add a slit R200

*\*all prices inclusive of vat\**

# 1701



## STYLE HB1701

### STANDARD OPTION:

Short R1290 | Straight R1520 | Tulip R1630

Tea length R1590 | Flare R1740 | Fit Flare R1740

Add a slit R200

### MADE TO MEASURE OPTION:

Short R1890 | Straight R2120 | Tulip R2230

Tea length R2190 | Flare R2340 | Fit Flare R2340

Add a slit R200

*\*all prices inclusive of vat\**







## STYLE HB1705

### STANDARD OPTION:

Short R1290 | Straight R1520 | Tulip R1630

Tea length R1590 | Flare R1740 | Fit Flare R1740

Add a slit R200

### MADE TO MEASURE OPTION:

Short R1890 | Straight R2120 | Tulip R2230

Tea length R2190 | Flare R2340 | Fit Flare R2340

Add a slit R200

*\*all prices inclusive of vat\*.*

# 1705



## SYLE HB1714

### STANDARD OPTION:

Short R1290 | Straight R1520 | Tulip R1630

Tea length R1590 | Flare R1740 | Fit Flare R1740

Add a slit R200

### MADE TO MEASURE OPTION:

Short R1890 | Straight R2120 | Tulip R2230

Tea length R2190 | Flare R2340 | Fit Flare R2340

Add a slit R200

*\*all prices inclusive of vat\**

# 1714

# 1805

STYLE HB1805

*\*all prices inclusive of vat\**



**STANDARD OPTION:**

Short R1270 | Straight R1490 | Tulip R1565

Tea length R1570 | Flare R1640 | Fit Flare R1640

Add a slit R200

**MADE TO MEASURE OPTION:**

Short R1870 | Straight R2090 | Tulip R2165

Tea length R2070 | Flare R2240 | Fit Flare R2240

Add a slit R200



1806

## STYLE HB1806

### STANDARD OPTION:

Short R1290 | Straight R1520 | Tulip R1630

Tea length R1590 | Flare R1740 | Fit Flare R1740

Add a slit R200

### MADE TO MEASURE OPTION:

Short R1890 | Straight R2120 | Tulip R2230

Tea length R2190 | Flare R2340 | Fit Flare R2340

Add a slit R200

*\*all prices inclusive of vat\**

# 1809



## STYLE HB1809

### STANDARD OPTION:

Short R1270 | Straight R1490 | Tulip R1565

Tea length R1570 | Flare R1640 | Fit Flare R1640

Add a slit R200

### MADE TO MEASURE OPTION:

Short R1870 | Straight R2090 | Tulip R2165

Tea length R2070 | Flare R2240 | Fit Flare R2240

Add a slit R200

*\*all prices inclusive of vat\**



1810

STYLE HB1810

*\*all prices inclusive of vat\**



**STANDARD OPTION:**

Short R1390 | Straight R1620 | Tulip R1730

Tea length R1690 | Flare R1840 | Fit Flare R1840

Add a slit R200

**MADE TO MEASURE OPTION:**

Short R1990 | Straight R2220 | Tulip R2330

Tea length R2290 | Flare R2440 | Fit Flare R2440

Add a slit R200



## SYLE HB1816

### STANDARD OPTION:

Short R1290 | Straight R1520 | Tulip R1630

Tea length R1590 | Flare R1740 | Fit Flare R1740

Add a slit R200

### MADE TO MEASURE OPTION:

Short R1890 | Straight R2120 | Tulip R2230

Tea length R2190 | Flare R2340 | Fit Flare R2340

Add a slit R200

*\*all prices inclusive of vat\**

# 1816

# 1821

STYLE HB1821

*\*all prices inclusive of vat\**



**STANDARD OPTION:**

Short R1390 | Straight R1620 | Tulip R1730

Tea length R1690 | Flare R1840 | Fit Flare R1840

Add a slit R200

**MADE TO MEASURE OPTION:**

Short R1990 | Straight R2220 | Tulip R2330

Tea length R2290 | Flare R2440 | Fit Flare R2440

Add a slit R200



# 1901



*\*all prices inclusive of vat\**



## STYLE HB1901

### STANDARD OPTION:

Short R1290 | Straight R1520 | Tulip R1630

Tea length R1590 | Flare R1740 | Fit Flare R1740

Add a slit R200

### MADE TO MEASURE OPTION:

Short R1890 | Straight R2120 | Tulip R2230

Tea length R2190 | Flare R2340 | Fit Flare R2340

Add a slit R200



# 1904

## STYLE HB1904

### STANDARD OPTION:

Short R1270 | Straight R1490 | Tulip R1565

Tea length R1570 | Flare R1640 | Fit Flare R1640

Add a slit R200

### MADE TO MEASURE OPTION:

Short R1870 | Straight R2090 | Tulip R2165

Tea length R2070 | Flare R2240 | Fit Flare R2240

Add a slit R200

*\*all prices inclusive of vat\**

# 1914



*\*all prices inclusive of vat\**



## STYLE HB1914

### STANDARD OPTION:

Short R1290 | Straight R1520 | Tulip R1630

Tea length R1590 | Flare R1740 | Fit Flare R1740

Add a slit R200

### MADE TO MEASURE OPTION:

Short R1890 | Straight R2120 | Tulip R2230

Tea length R2190 | Flare R2340 | Fit Flare R2340

Add a slit R200



## STYLE HB1915

### STANDARD OPTION:

Short R1230 | Straight R1450 | Tulip R1525

Tea length R1585 | Flare R1600 | Fit Flare R1600

Add a slit R200

### MADE TO MEASURE OPTION:

Short R1830 | Straight R2050 | Tulip R2120

Tea length R2185 | Flare R2200 | Fit Flare R2200

Add a slit R200

*\*all prices inclusive of vat\**

# 1915



## SYLE HB2101

### STANDARD OPTION:

Short R1290 | Straight R1520 | Tulip R1630

Tea lenght R1590 | FlareR1740 | Fit Flare R1740

Add a slit R200

### MADE TO MEASURE OPTION:

Short R1890 | Straight R2120 | Tulip R2230

Tea length R2190 | Flare R2340 | FitFlare R2340

Add a slit R200

*\*all prices inclusive of vat\**

# 2101

2104

STYLE HB2104

*\*all prices inclusive of vat\**



*\*all prices inclusive of vat\**

**STANDARD OPTION:**

Short R1290 | Straight R1520 | Tulip R1630

Tea length R1590 | Flare R1740 | Fit Flare R1740

Add a slit R200

**MADE TO MEASURE OPTION:**

Short R1890 | Straight R2120 | Tulip R2230

Tea length R2190 | Flare R2340 | Fit Flare R2340

Add a slit R200



## STYLE HB2105

### STANDARD OPTION:

Short R1290 | Straight R1520 | Tulip R1630

Tea length R1590 | Flare R1740 | Fit Flare R1740

Add a slit R200

### MADE TO MEASURE OPTION:

Short R1890 | Straight R2120 | Tulip R2230

Tea length R2190 | Flare R2340 | Fit Flare R2340

Add a slit R200

*\*all prices inclusive of vat\*.*

# 2105

# 2106



*\*all prices inclusive of vat\**



## STYLE HB2106

### STANDARD OPTION:

Short R1230 | Straight R1450 | Tulip R1525

Tea length R1585 | Flare R1600 | Fit Flare R1600

Add a slit R200

### MADE TO MEASURE OPTION:

Short R1830 | Straight R2050 | Tulip R2120

Tea length R2185 | Flare R2200 | Fit Flare R2200

Add a slit R200



# 2107



## STYLE HB2107

### STANDARD OPTION:

Short R1270 | Straight R1490 | Tulip R1565

Tea length R1570 | Flare R1640 | Fit Flare R1640

Add a slit R200

### MADE TO MEASURE OPTION:

Short R1870 | Straight R2090 | Tulip R2165

Tea length R2070 | Flare R2240 | Fit Flare R2240

Add a slit R200

*\*all prices inclusive of vat\**



# 2112



STYLE HB2112

**STANDARD OPTION:**

Short R1390 | Long R1790 | Tulip R1590

**MADE TO MEASURE OPTION:**

Short R1990 | Long R2390 | Tulip R2090

*\*all prices inclusive of vat\*.*

# 2114

STYLE HB2114

*\*all prices inclusive of vat\**



**STANDARD OPTION:**

Short R1290 | Straight R1520 | Tulip R1630

Tea length R1590 | Flare R1740 | Fit Flare R1740

Add a slit R200

**MADE TO MEASURE OPTION:**

Short R1890 | Straight R2120 | Tulip R2230

Tea length R2190 | Flare R2340 | Fit Flare R2340

Add a slit R200

# 2121



## STYLE HB2121

STANDARD OPTION:

Short R1270 | Straight R1490 | Tulip R1565

Tea length R1570 | Flare R1640 | Fit Flare R1640

Add a slit R200

MADE TO MEASURE OPTION:

Short R1870 | Straight R2090 | Tulip R2165

Tea length R2070 | Flare R2240 | Fit Flare R2240

Add a slit R200

# 2125



*\*all prices inclusive of vat\**



## STYLE HB2125

### STANDARD OPTION:

Short R1270 | Straight R1490 | Tulip R1565

Tea length R1570 | Flare R1640 | Fit Flare R1640

Add a slit R200

### MADE TO MEASURE OPTION:

Short R1870 | Straight R2090 | Tulip R2165

Tea length R2070 | Flare R2240 | Fit Flare R2240

Add a slit R200

# 2201

STYLE HB2201

*\*all prices inclusive of vat\**



**STANDARD OPTION:**

Short R1270 | Straight R1490 | Tulip R1565

Tea length R1570 | Flare R1640 | Fit Flare R1640

Add a slit R200

**MADE TO MEASURE OPTION:**

Short R1870 | Straight R2090 | Tulip R2165

Tea length R2070 | Flare R2240 | Fit Flare R2240

Add a slit R200

2202



STYLE HB2202

STANDARD OPTION:

Short R1350 | Long R1750 | Tulip R1550

MADE TO MEASURE OPTION:

Short R1950 | Long R2530 | Tulip R2050

*\*all prices inclusive of vat\**

2203



*\*all prices inclusive of vat\**



## STYLE HB2203

### STANDARD OPTION:

Short R1230 | Straight R1450 | Tulip R1525

Tea length R1585 | Flare R1600 | Fit Flare R1600

Add a slit R200

### MADE TO MEASURE OPTION:

Short R1830 | Straight R2050 | Tulip R2125

Tea length R2185 | Flare R2200 | Fit Flare R2200

Add a slit R200



2204

STYLE HB2204

*\*all prices inclusive of vat\**



**STANDARD OPTION:**

Short R1290 | Straight R1520 | Tulip R1630

Tea length R1590 | Flare R1740 | Fit Flare R1740

Add a slit R200

**MADE TO MEASURE OPTION:**

Short R1890 | Straight R2120 | Tulip R2230

Tea length R2190 | Flare R2340 | Fit Flare R2340

Add a slit R200

*\*all prices inclusive of vat\**

# 2205

STYLE HB2205

*\*all prices inclusive of vat\**



**STANDARD OPTION:**

Short R1270 | Straight R1490 | Tulip R1565

Tea length R1570 | Flare R1640 | Fit Flare R1640

Add a slit R200

**MADE TO MEASURE OPTION:**

Short R1870 | Straight R2090 | Tulip R2165

Tea length R2070 | Flare R2240 | Fit Flare R2240

Add a slit R200

2206



*\*all prices inclusive of vat\**



STYLE HB2206

STANDARD OPTION:

Short R1270 | Straight R1490 | Tulip R1565

Tea length R1570 | Flare R1640 | Fit Flare R1640

Add a slit R200

MADE TO MEASURE OPTION:

Short R1870 | Straight R2090 | Tulip R2165

Tea length R2070 | Flare R2240 | Fit Flare R2240

Add a slit R200

# 2207

## STYLE HB2207

*\*all prices inclusive of vat\**



### STANDARD OPTION:

Short R1270 | Straight R1490 | Tulip R1565

Tea length R1570 | Flare R1640 | Fit Flare R1640

Add a slit R200

### MADE TO MEASURE OPTION:

Short R1870 | Straight R2090 | Tulip R2165

Tea length R2070 | Flare R2240 | Fit Flare R2240

Add a slit R200

2208

STYLE HB2208

*\*all prices inclusive of vat\**



**STANDARD OPTION:**

Short R1230 | Straight R1450 | Tulip R1525

Tea length R1585 | Flare R1600 | Fit Flare R1600

Add a slit R200

**MADE TO MEASURE OPTION:**

Short R1830 | Straight R2050 | Tulip R2120

Tea length R2185 | Flare R2200 | Fit Flare R2200

Add a slit R200

# 2210

STYLE HB2210

*\*all prices inclusive of vat\**



**STANDARD OPTION:**

Short R1390 | Straight R1620 | Tulip R1730

Tea length R1690 | Flare R1840 | Fit Flare R1840

Add a slit R200

**MADE TO MEASURE OPTION:**

Short R1990 | Straight R2220 | Tulip R2330

Tea length R2290 | Flare R2440 | Fit Flare R2440

Add a slit R200

# 2211

## STYLE HB2211

*\*all prices inclusive of vat\**



### STANDARD OPTION:

Top:R350

Short R580 | Straight R660 | Tulip R790

Tea length R850 | FlareR950 | Fit Flare R950

Add a slit R200

### MADE TO MEASURE OPTION:

Top:R550

Short R980 | Straight R1060 | Tulip R1190

Tea length R1280 | Flare R1350 | FitFlare R2240

Add a slit R200

2212



*\*all prices inclusive of vat\**

## STYLE HB2212

### STANDARD OPTION:

Short R1270 | Straight R1490 | Tulip R1565

Tea length R1570 | Flare R1640 | Fit Flare R1640

Add a slit R200

### MADE TO MEASURE OPTION:

Short R1870 | Straight R2090 | Tulip R2165

Tea length R2070 | Flare R2240 | Fit Flare R2240

Add a slit R200



# 2213



## STYLE HB2213

### STANDARD OPTION:

Short R1390 | Straight R1620 | Tulip R1730

Tea length R1690 | Flare R1840 | Fit Flare R1840

Add a slit R200

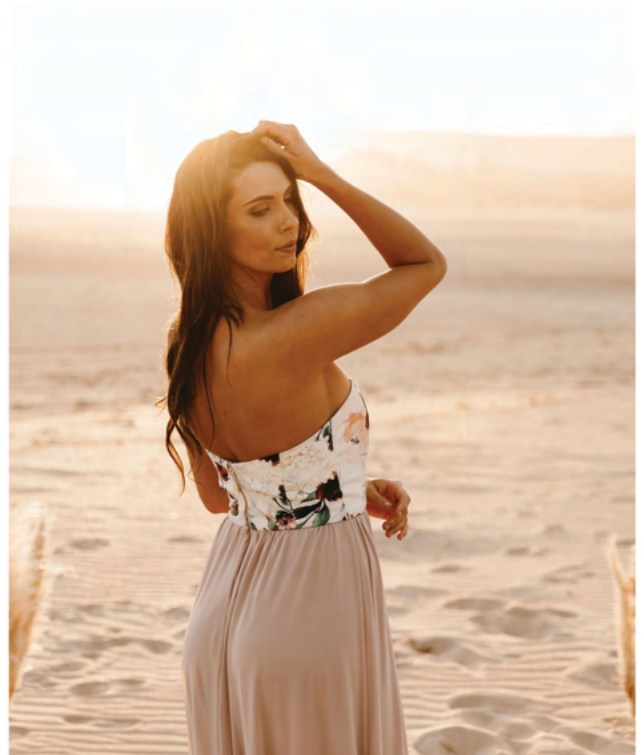
### MADE TO MEASURE OPTION:

Short R1990 | Straight R2220 | Tulip R2330

Tea length R2290 | Flare R2440 | Fit Flare R2440

Add a slit R200

*\*all prices inclusive of vat\**



# 2214



*\*all prices inclusive of vat\**



## STYLE HB2214

### STANDARD OPTION:

Short R1230 | Straight R1450 | Tulip R1525

Tea length R1585 | Flare R1600 | Fit Flare R1600

Add a slit R200

### MADE TO MEASURE OPTION:

Short R1830 | Straight R2050 | Tulip R2125

Tea length R2185 | Flare R2200 | Fit Flare R2200

Add a slit R200

# 2215



## STYLE HB2215

### STANDARD OPTION:

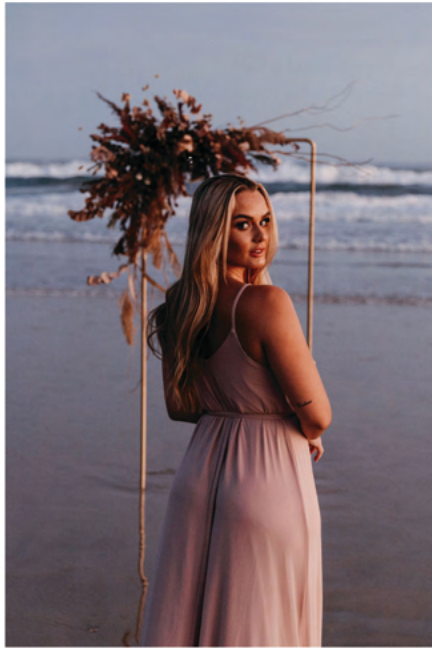
Short R1390 | Long R1790 | Tulip R1590

### MADE TO MEASURE OPTION:

Short R1990 | Long R2390 | Tulip R2090

*\*all prices inclusive of vat\*.*

# 2216



## STYLE HB2216

### STANDARD OPTION:

Short R1390 | Long R1790 | Tulip R1590

### MADE TO MEASURE OPTION:

Short R1990 | Long R2390 | Tulip R2090

*\*all prices inclusive of vat\*.*

# 2217



## STYLE HB2217

### STANDARD OPTION:

Short R1350 | Long R1750 | Tulip R1550

### MADE TO MEASURE OPTION:

Short R1950 | Long R2530 | Tulip R2050

*\*all prices inclusive of vat\*.*

# TERMS AND CONDITIONS

The Quotation is only considered accepted once a 50% deposit is paid. The balance is payable on collection of goods, unless otherwise negotiated in writing or credit terms in place.

**Cancellation Policy:** We will impose a cancellation fee in the event of cancellation before delivery. The minimum cancellation fee is 50% of the total invoice amount if the goods have not been manufactured yet. The fee will depend on the nature of the order, the length notice of cancellation before delivery, the reasonable potential to find alternative clients for the order and the reason for cancellation. No refund on deposits in the event of cancellation for already ordered or made Special-Order Goods.

**Delivery Policy:** The client is responsible for the collection of the goods at the business physical address unless otherwise agreed.

We can arrange delivery on behalf of the client. If we arrange a delivery on behalf of the client, it will be at the clients cost depending on the area of delivery and the risk of handling the goods will be on the client as soon as the goods are placed on a delivery vehicle. The client must arrange their own insurance in this regard. We will communicate unavoidable delay in the delivery.

**Courier:** Hoiden will NEVER be liable for ANY courier fees (especially not for any alterations, returns or tailoring) and will always be on the Clients' final invoice. Hoiden have an account with one courier company i.e Globeflight and will ensure to use the most affordable one for the location provided however Hoiden will not be responsible for late deliveries affected by the couriers. Please advise if you'd like to use your own courier.

**Refund Policy:** Please choose carefully. We do not allow refunds as all our dresses are specially made-up according to custom sizes chosen,

colours and styles. Where goods are defective, we need to be notified about it within 30 days after it has left our premises. If the product does not perform we need to be notified about it, and repairs will be arranged. If the product is installed, affixed or amended we will not accept a return of the product. We may charge a handling fee of 10% of the price if the return is accepted by management.

**Fabric Manufacturers:** The Client agrees that in no instance will Hoiden be responsible for any colour shade changes that might have occurred. Since Hoiden has no control over the manufacturing of the fabrics being purchased, Hoiden cannot take blame for colour changes that might occur in the dye of the fabric. Hoiden will however ensure that all changes will be kept to a minimum. Please also note that the lace pattern may change according to the colour chosen. The lace on the final product may not coincide with the lace on the catalogue. If different colours are chosen in the same style, please expect the lace pattern to all be different. Please do communicate with us if you're specific about the lace pattern.

**Colour chart:** All colours displayed on the colour chart are Hoiden's best effort at a match to the actual fabric colour. Hoiden takes no responsibility over differences in colour between the chart and the actual colour goods received. Please note that due to different monitor/screen/photographers editing/printer settings colours may appear differently to the actual colour intended. If you would like to be certain we do suggest asking for a physical colour swatch to be couriered at courier charges.

**IF STANDARD SIZE OPTION WAS CHOSEN:** Under no circumstances will alterations or tailoring of the goods be done at no cost. If tailoring or alterations are requested then an acceptable quote will be calculated and communicated before continuing. Please do make sure about the size by using our size guide and Youtube tutorial. Because the goods are made on order according to the specific size and colour we do not accept returns or exchanges if the wrong size was chosen. If any help is needed with choosing a size, please do communicate with our team that you need help.

**IF CUSTOM MEASUREMENT OPTION WAS CHOSEN:** Please ensure that measurements are taken correctly according to the measuring chart and tutorial on Youtube. Tailoring and alterations are included in your price but do expect minor alterations at your fittings. Measurements are given and used accordingly but for the absolute perfect fit, tailoring will always be needed. Measurements can only help us to identify the correct sizing but not to create an individual's exact body shape, so we do suggest having it altered if necessary.

## **WHERE TO FIND US**

### **HOIDEN PORT ELIZABETH**

33 WESTBOURNE RD RICHMOND HILL, PE  
TEL: 041 582 1066  
EMAIL : hello@hoiden.co.za

### **HOIDEN CAPE TOWN**

1/8 A HIGH STREET, ROSENPARK, BELLVILLE  
TEL: 021 914 0370  
EMAIL: capetown@hoiden.co.za

### **WEBSITE**

[www.hoiden.co.za](http://www.hoiden.co.za)

**VAT #4070274602**

## **PHOTOSHOOT CREDIT**

**Niki M Photography (2016-2019)**

**Dyallan Knox (2021-2022)**

**Hair by Jade Liston**

**Make up by Iris Gomez**